



# SERVICE BULLETIN

Classification: AT09-014	Reference: NTB09-138	Date: December 18, 2009
-----------------------------	-------------------------	----------------------------

## 2009 – 2010 MAXIMA; BOOMING NOISE OR VIBRATION

**APPLIED VEHICLE:** 2009 - 2010 Maxima (A35)

### IF YOU CONFIRM:

There is a booming noise and/or vibration when **all** of the following conditions are present:

- Speed between 20 and 45 mph  
and
- Transmission is in “lock-up”  
and
- Engine RPM between 1200 and 1500  
and
- Light acceleration

### ACTIONS:

**Important:** Before performing the reprogramming procedure in this bulletin, make sure the customer has been informed of the Customer Information on the next page.

1. Refer to Step 2 in the Service Procedure to confirm this bulletin applies to the vehicle you are working on.
2. If this bulletin applies, reprogram the TCM.

### CLAIMS INFORMATION

Submit a Primary Failed Part (PP) line claim using the following claims coding:

DESCRIPTION	PFP	OP CODE	SYM	DIA	FRT
Reprogram TCM (TCM Initialization included)	(1)	JE99AA	HD	32	(2)

- (1) Reference the Repair Order and use the **current** TCM P/N written down in Step 2 of the Service Procedure as the PFP.
- (2) Reference the current Nissan Warranty Flat Rate Manual and use the indicated FRT.

**IMPORTANT:** The purpose of **ACTIONS** (above) is to give you a quick idea of the work you will be performing. You **MUST** closely follow the entire Service Procedure as it contains information that is essential to successfully completing this repair.

Nissan Bulletins are intended for use by qualified technicians, not 'do-it-yourselfers'. Qualified technicians are properly trained individuals who have the equipment, tools, safety instruction, and know-how to do a job properly and safely. NOTE: If you believe that a described condition may apply to a particular vehicle, DO NOT assume that it does. See your Nissan dealer to determine if this applies to your vehicle.

## **Customer Information**

1. Slight noise and/or vibration under the conditions described above are a normal operating characteristic of this vehicle and are within design specifications for the vehicle.
2. For those customers who are particularly sensitive to this characteristic of their vehicles, the transmission control module reprogramming procedure described in this bulletin may be performed. However, the customer should be advised that this is a specification change and differs from the original specification that exists on their vehicle.
3. If a customer voluntarily chooses to have this specification change made to their vehicle, they should be advised that their actual MPG may (or may not) slightly decrease (up to 1 mpg) as a result, depending on their driving habits and other conditions.

## **SERVICE PROCEDURE**

1. Connect CONSULT III (C-III) to the vehicle to begin the TCM reprogramming procedure.
  - If you are not familiar with the TCM reprogramming procedure, click [here](#). This will link you to the CONSULT-III (C-III) Transmission Control Module (TCM) Reprogramming and Initialization general procedure.

### **CAUTION:**

- Connect a battery charger to the vehicle battery.  
If the 12V battery voltage drops during reprogramming, the TCM may be damaged.
- Be sure to turn OFF all vehicle electrical loads.  
If a vehicle electrical load remains ON, the TCM may be damaged.
- For TCM reprogramming, the C-III MUST be connected to the VI using the USB cable.
- Be sure to connect the AC Adapter.  
If the C-III battery voltage drops during reprogramming, the process will be interrupted and the TCM will be damaged.

2. When you get to the TCM Reprogramming screen shown in Figure 1, confirm TCM reprogramming applies as follows.
  - A. On your C-III screen, look at the **Part Number (P/N)** column (see Figure 1).
    - Write down the P/N on the Repair Order.

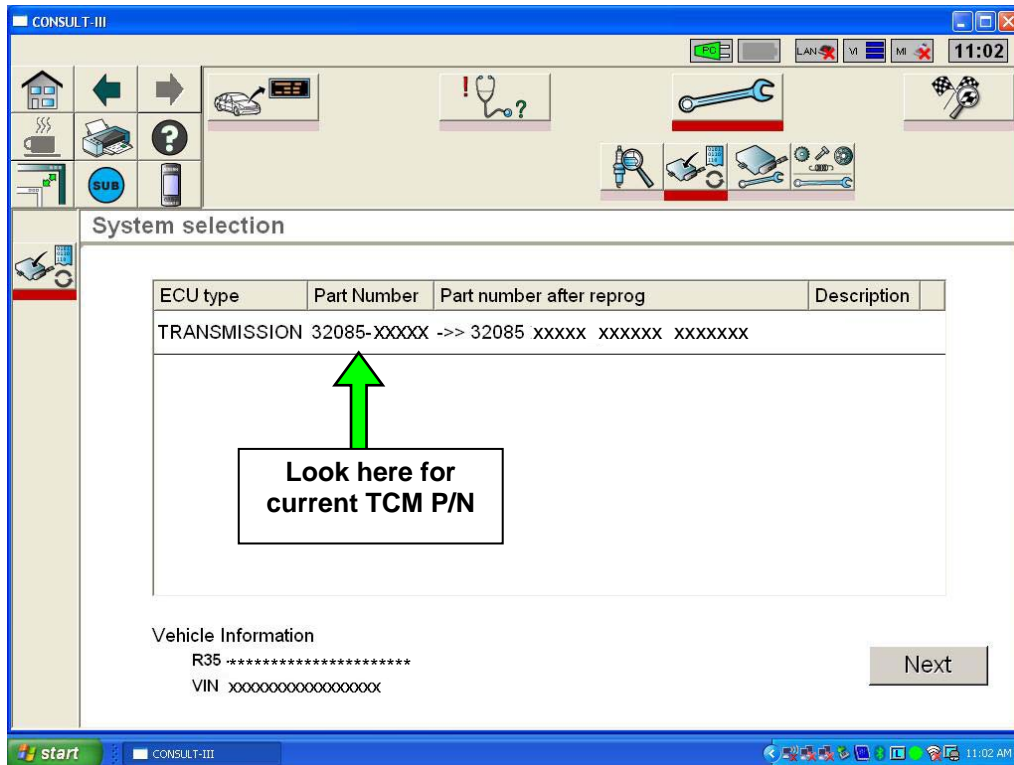


Figure 1

- B. Compare the P/N you wrote down to the numbers in the **Current TCM P/N** column in **Table A** below.
  - If there is a match this bulletin applies. Continue with the reprogramming procedure.
 

**NOTE:** If there are two lines (two reprogramming options) on your C-III screen, use the one with the message "Caution! Use ONLY with NTB09-138."
  - If there is not a match, this bulletin does not apply. Refer to ASIST for further diagnostic information.

Table A

Model	Current TCM P/N
Maxima 2009 and 2010	31036 - 9N00C
	31036 - 9N00D
	31036 - 9N00E
	31036 - 9N01A

3. If this bulletin applies and you have performed TCM reprogramming, the screen in Figure 2 displays when reprogramming is complete.

**Print this screen and attach it to the Repair Order for Warranty documentation.**



Figure 2

4. Make sure to erase DTCs from all systems.

**NOTE:** During reprogramming, DTCs will set in several systems and must be erased.

5. Test drive the vehicle and make sure it operates correctly.

- Diagnosis and repairs beyond TCM reprogramming are not covered by this bulletin.

